

Watt Power

Power Development Proposals

PROGRESS 
POWER

Hirwau 
power



Agenda

1. Welcome and Introductions
2. Programme and Project Background
 - Stag Energy and Watt Power
 - Hirwaun Power
 - Progress Power
3. Consultation
4. Rochdale Envelope
5. Application Documents
6. Consent Services Unit



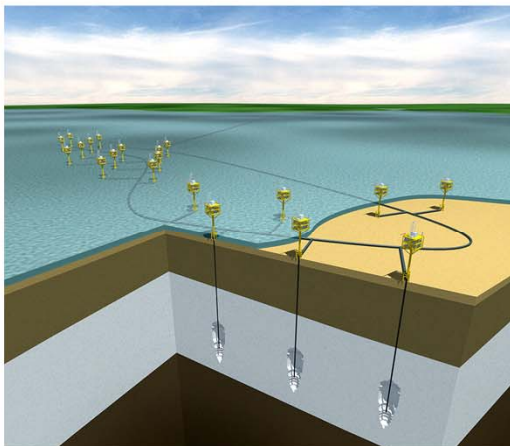
Programme and Project Background



Stag Energy

Stag Energy identifies, develops and finances mid-stream energy projects

Storage



Transmission



Generation

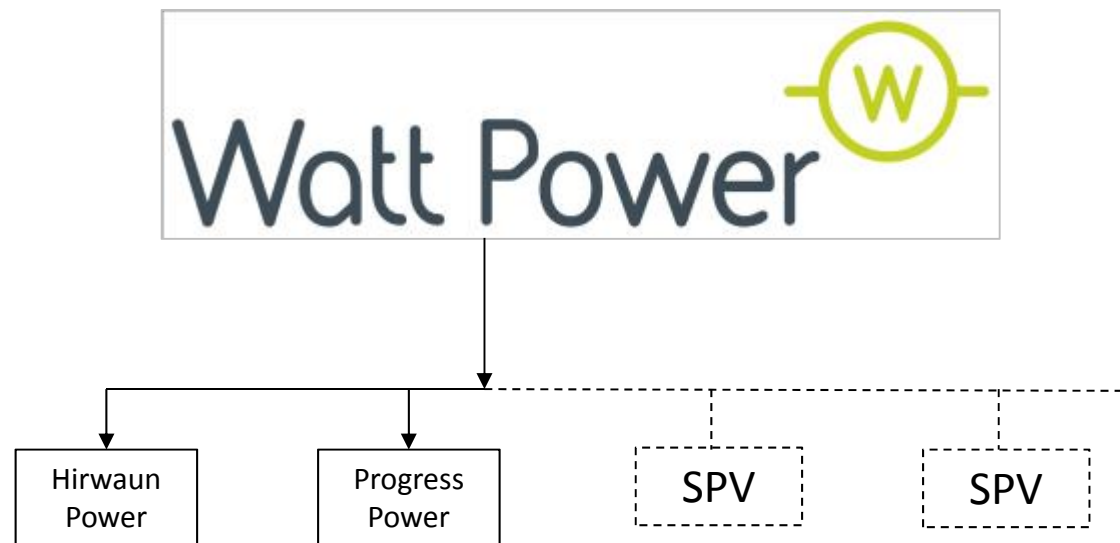


... acting primarily as principal in the origination of investments

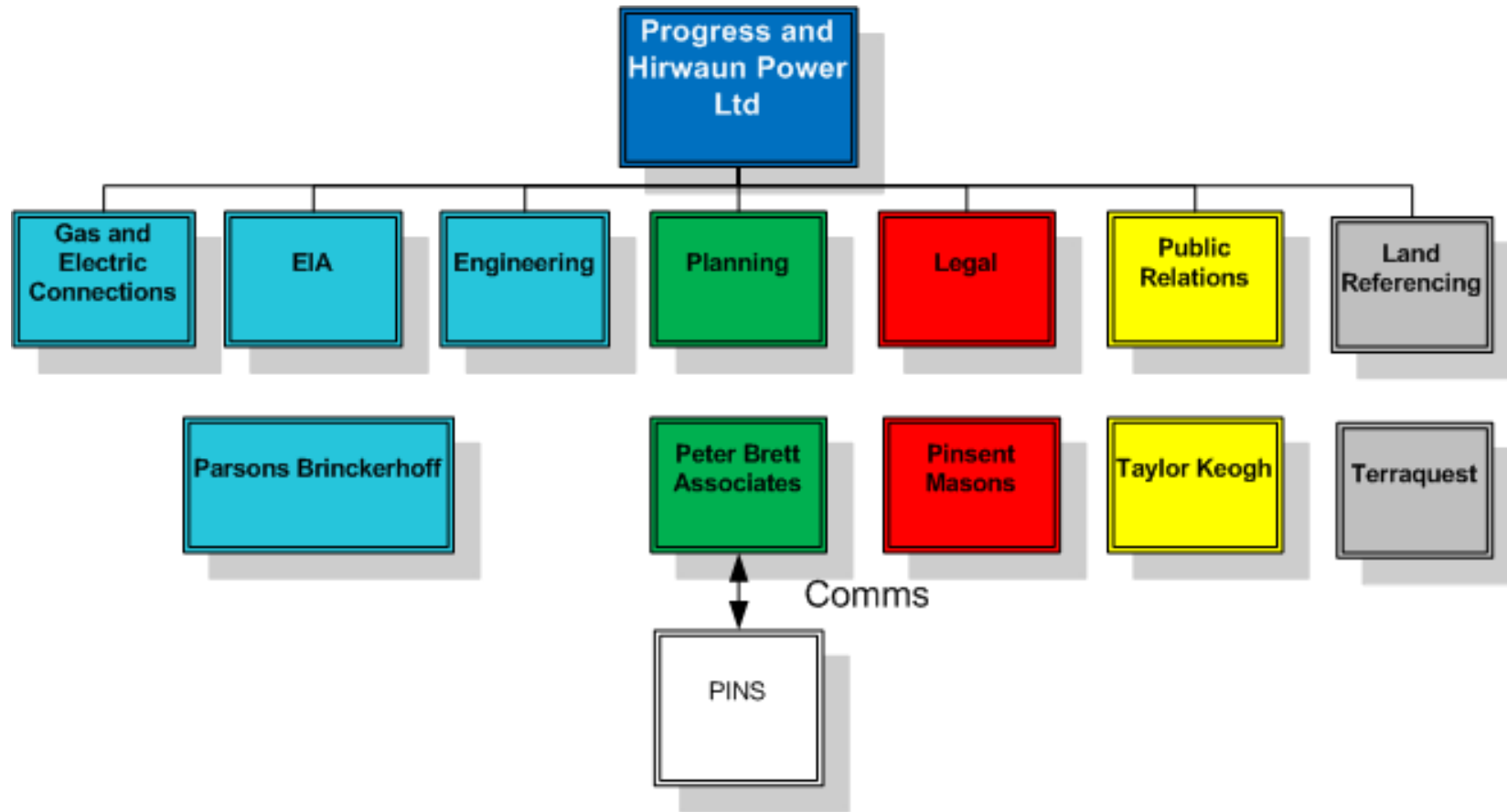


Watt Power

- Formed to develop new power projects in the rapidly evolving electricity generation business
- Aim to develop 2,000 MW of flexible gas fired generation plant across the UK



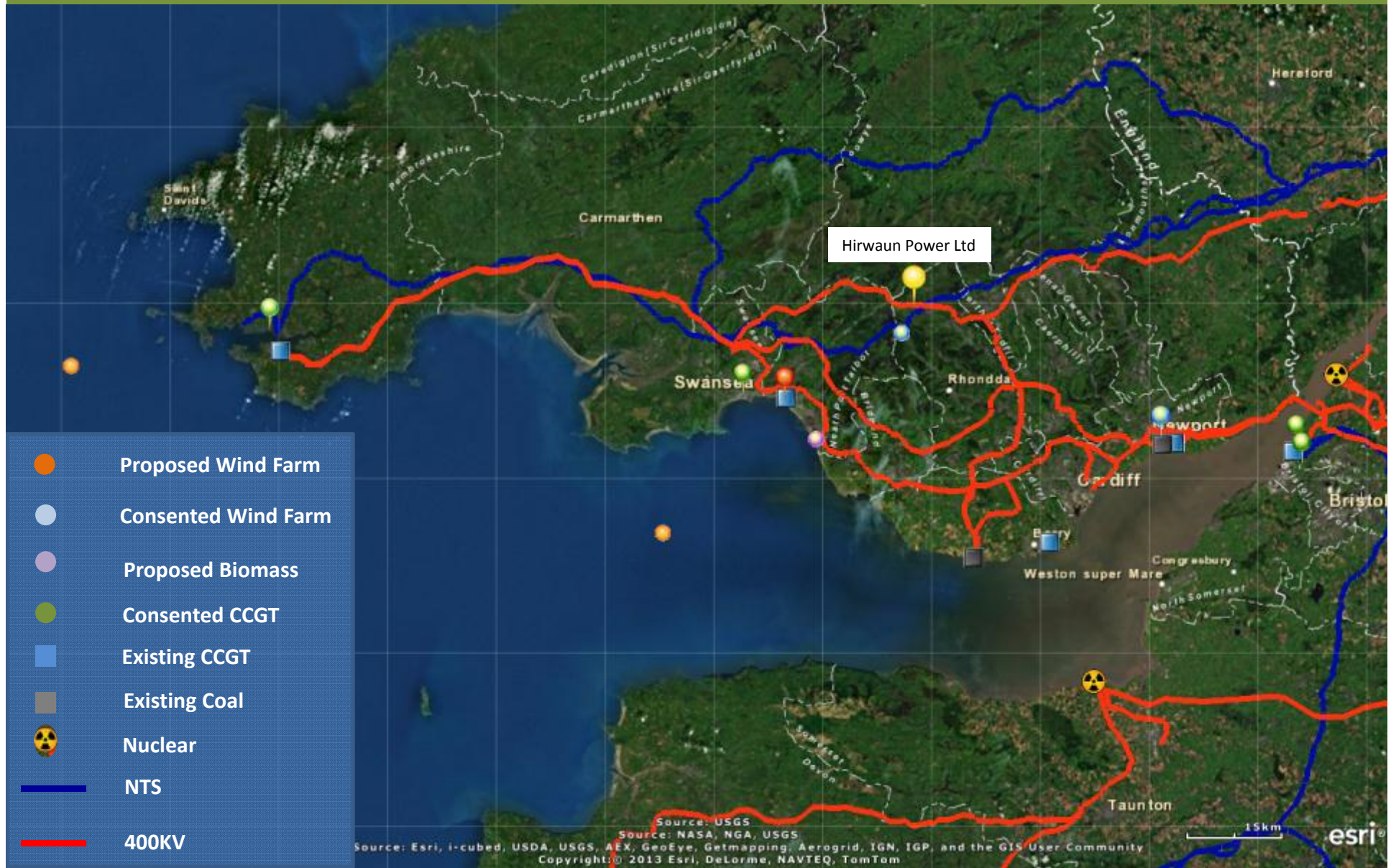
Project Team - Structure





Power Development Proposal

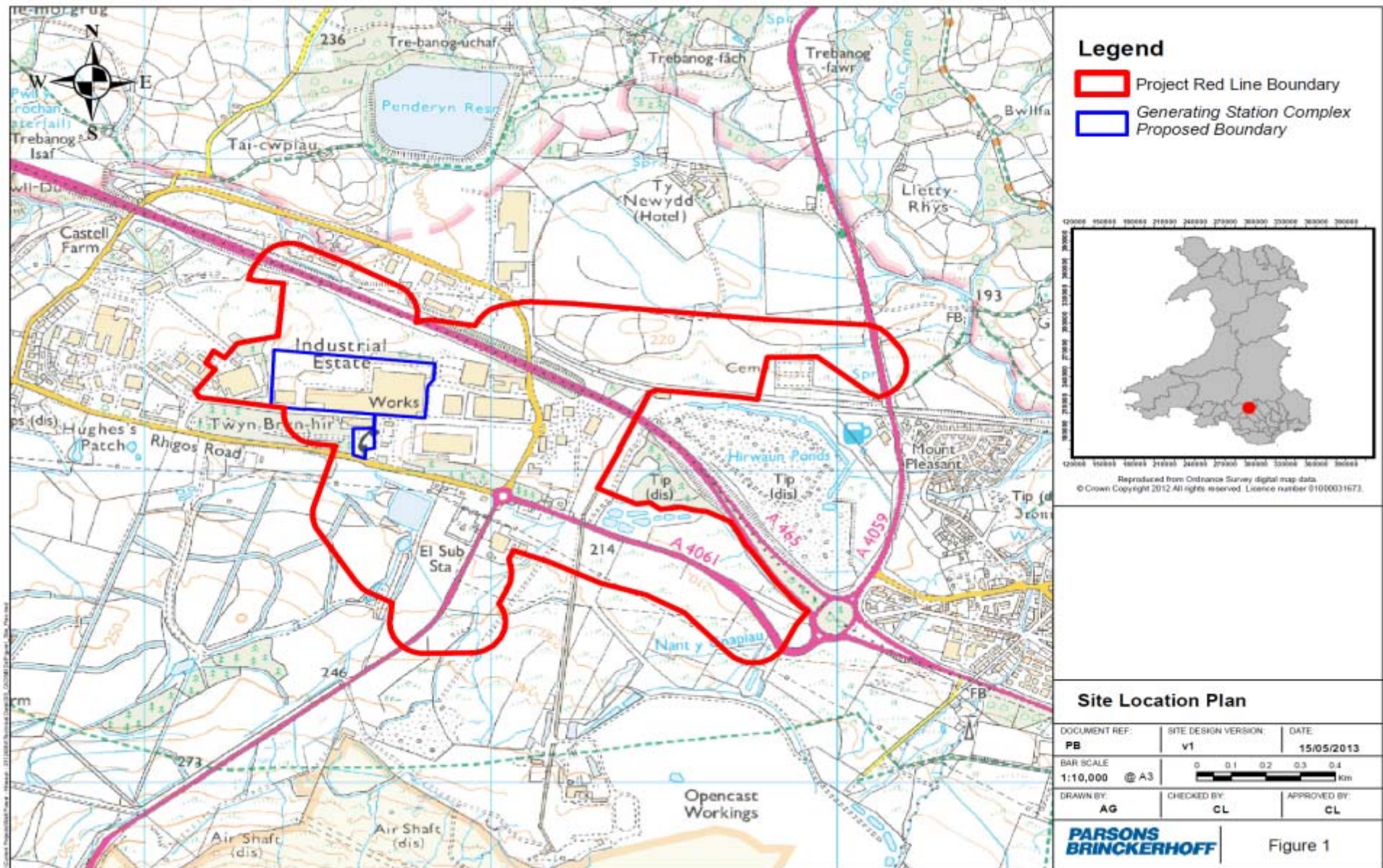
Hirwaun Power Ltd, South Wales



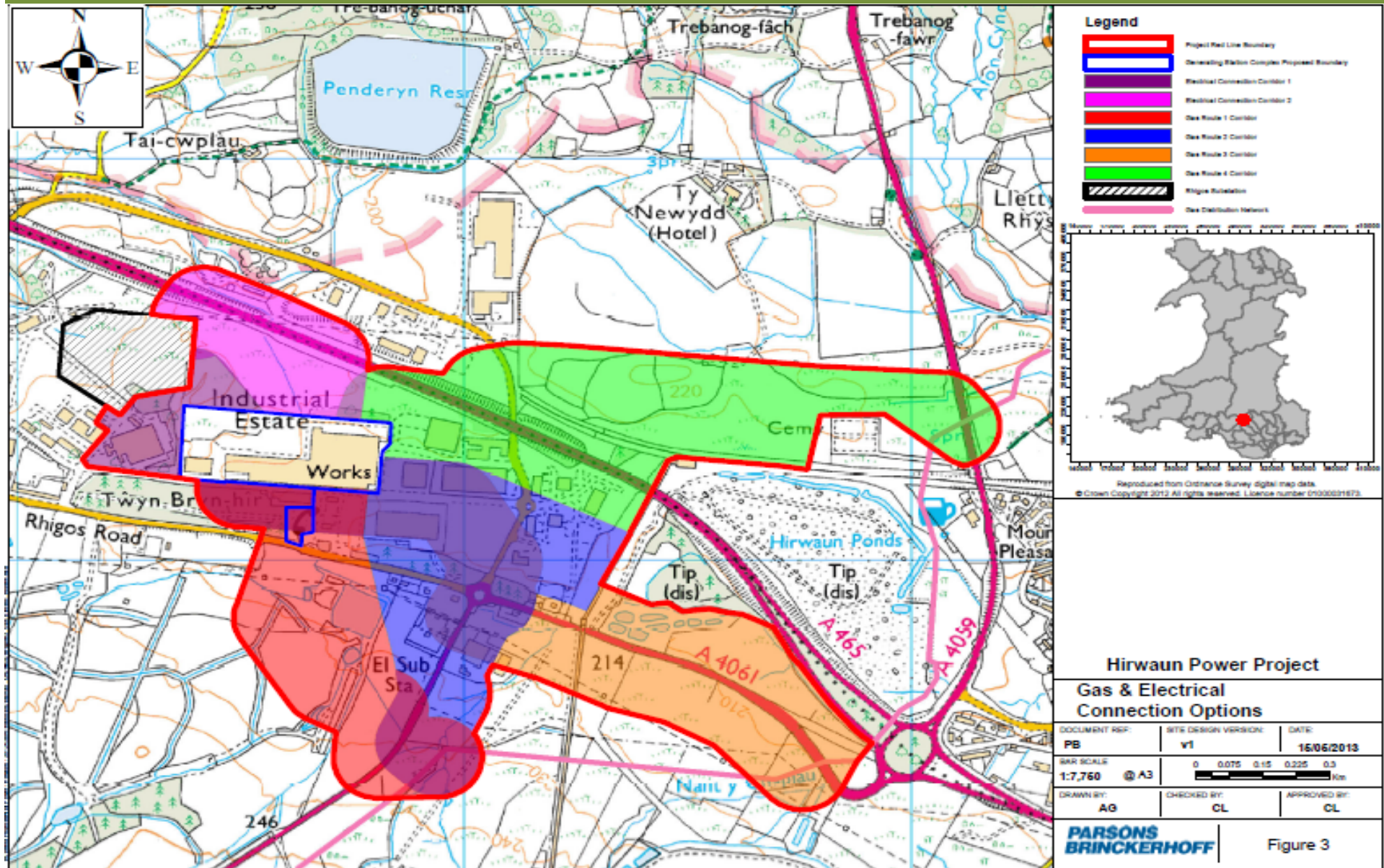
Hirwaun Power Ltd



Hirwaun Power Ltd



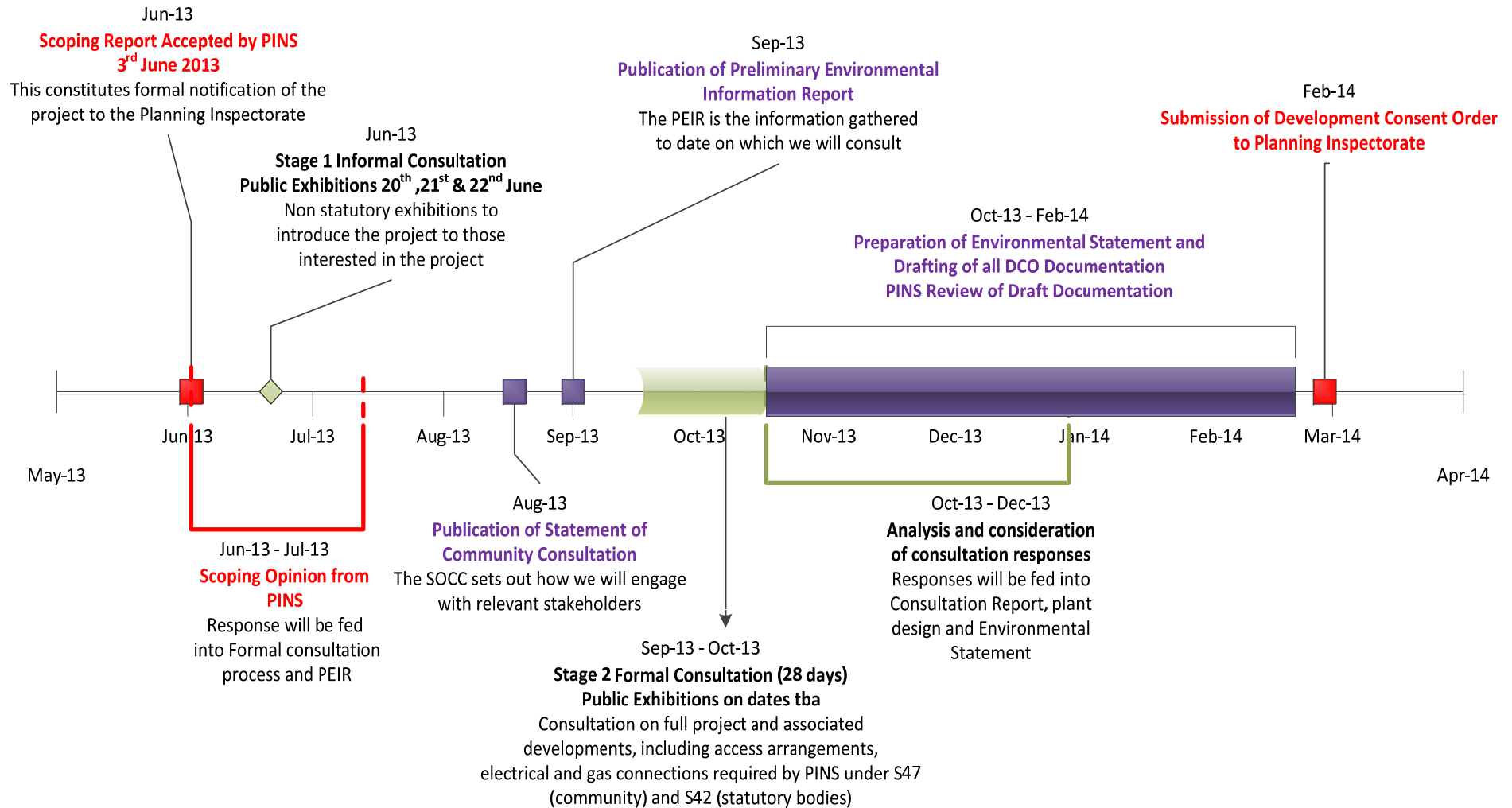
Hirwaun Power Connections



Timelines

HPL – Pre Application Programme

Hirwaun Power Limited – Project Milestones and Consultation Dates (Pre-Application)



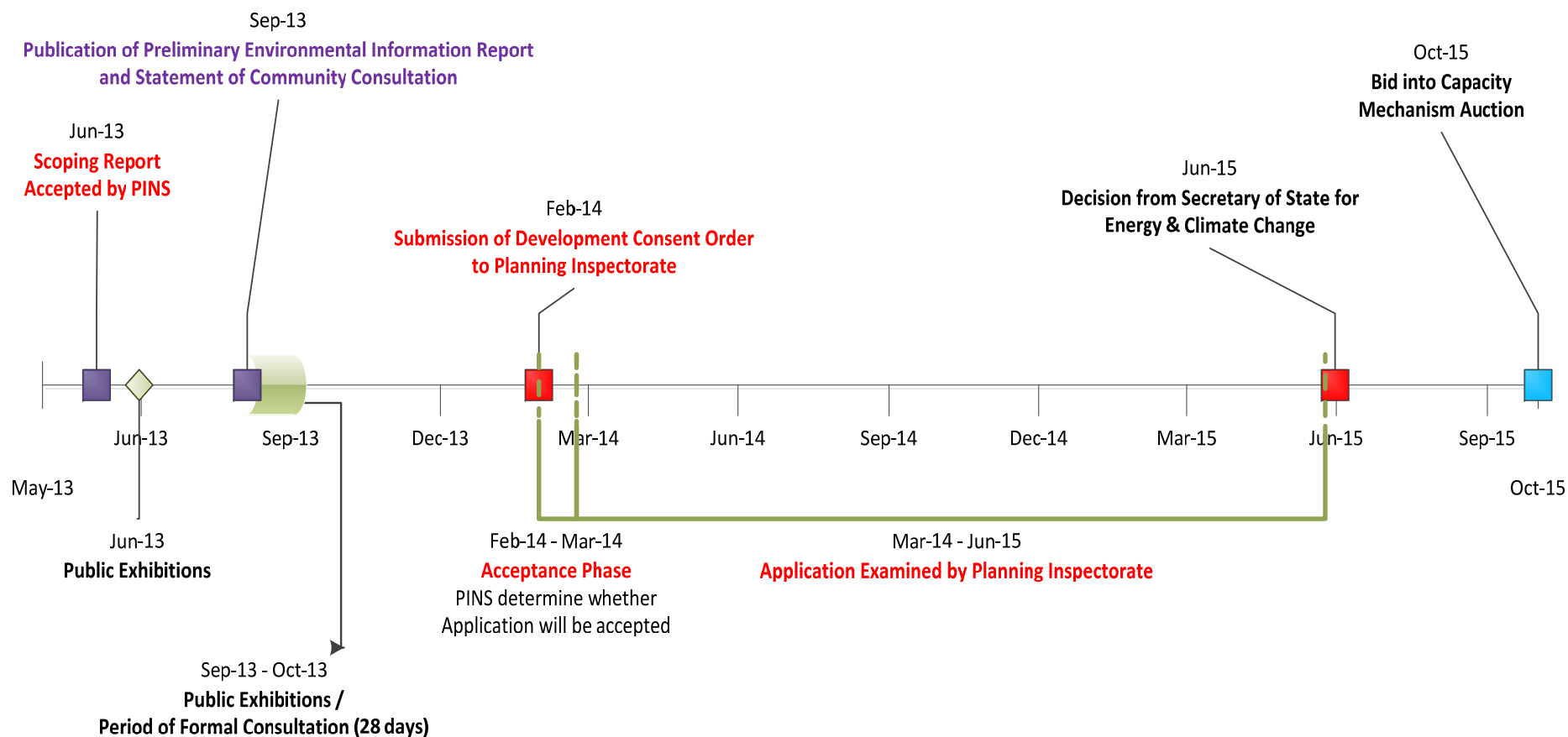
HPL – Project Programme

Hirwaun Power Ltd – Project Milestones

Pre Application Phase

Examination Phase

Capacity
Auction Bid



EIA Headlines

Hirwaun Power

- **Scoping Report submitted and highlights key environmental considerations**
 - Noise
 - Air Quality
 - Landscape and Visual Impact
 - Socio Economics

Electrical and Gas Connections

Gas and Electrical Connections – Hirwaun Power

- **Gas connection \approx 0.5 – 1.5km**
- **Electrical connection \approx 0.2 - 2km**
- **Electrical connection could be an underground cable or an overhead line.**

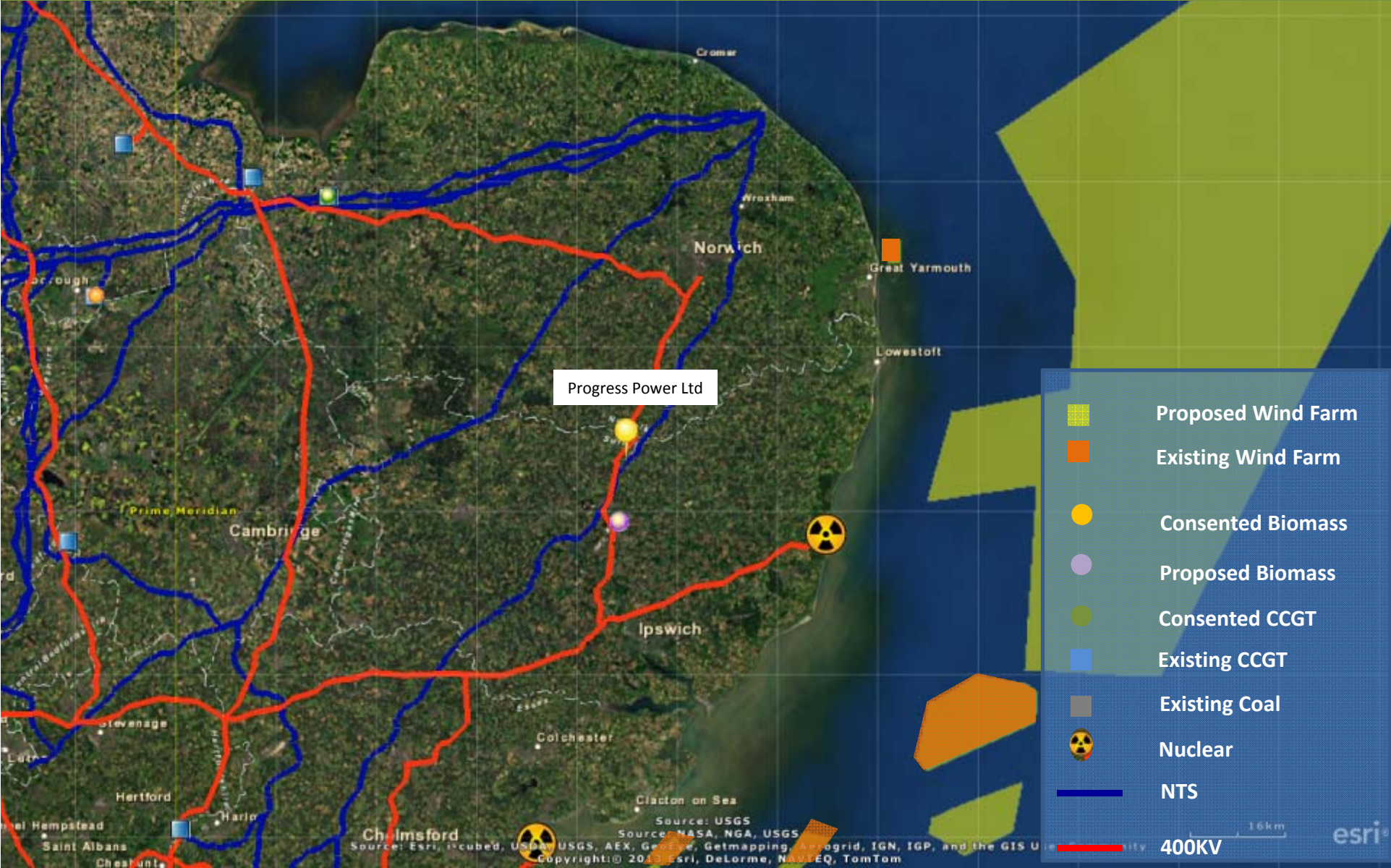
Gas and Electrical Connections - Consents

- Both the gas and electrical connections may be included in the proposed DCO application.
- Proposed amendment to s.16 of the PA 2008 Act so that an OHL < 2km will no longer qualify as an NSIP.
- If not included in the DCO, the connections will likely be consented under the TCPA 1990 (possibly relying on PD rights).

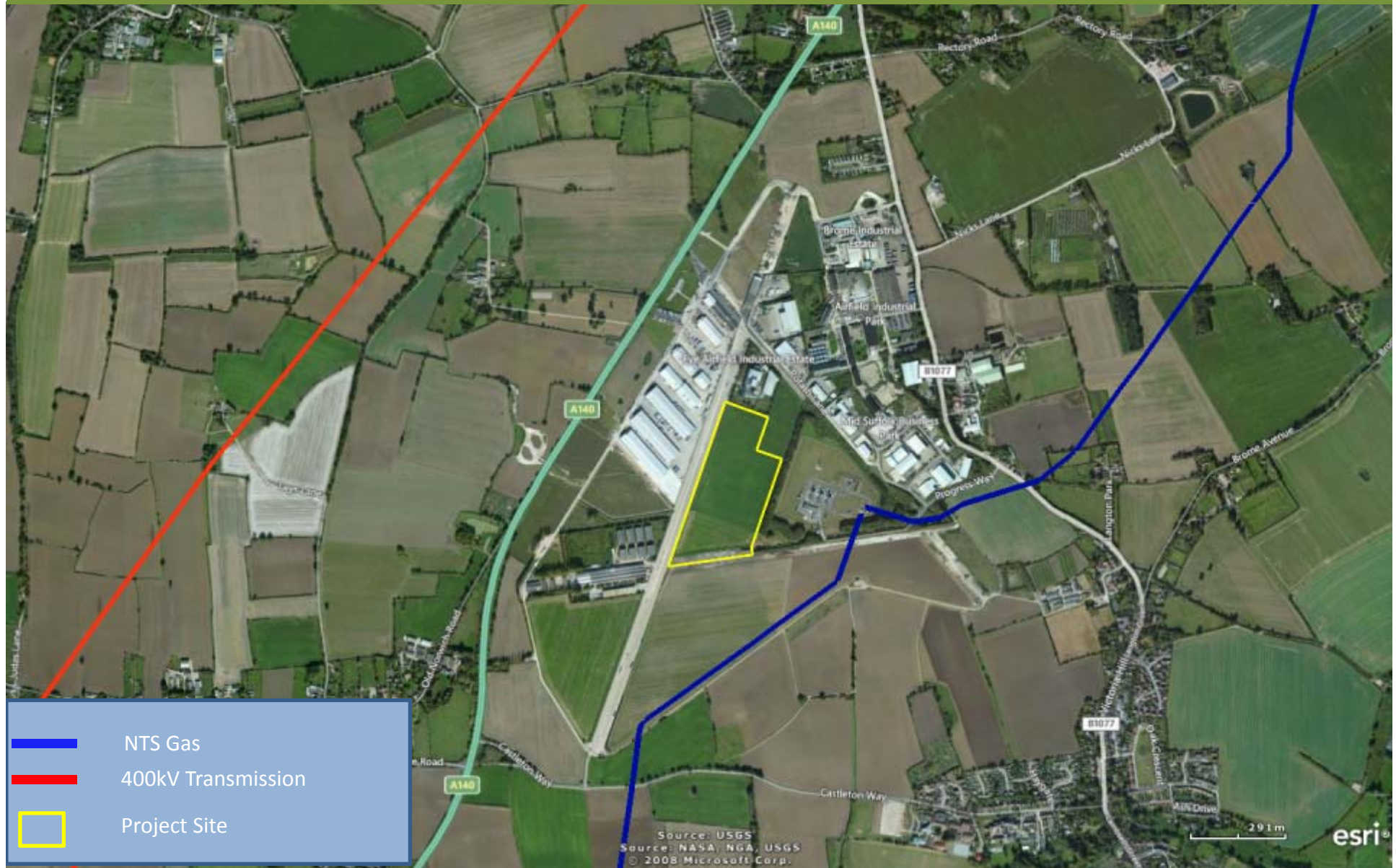


Power Development Proposal

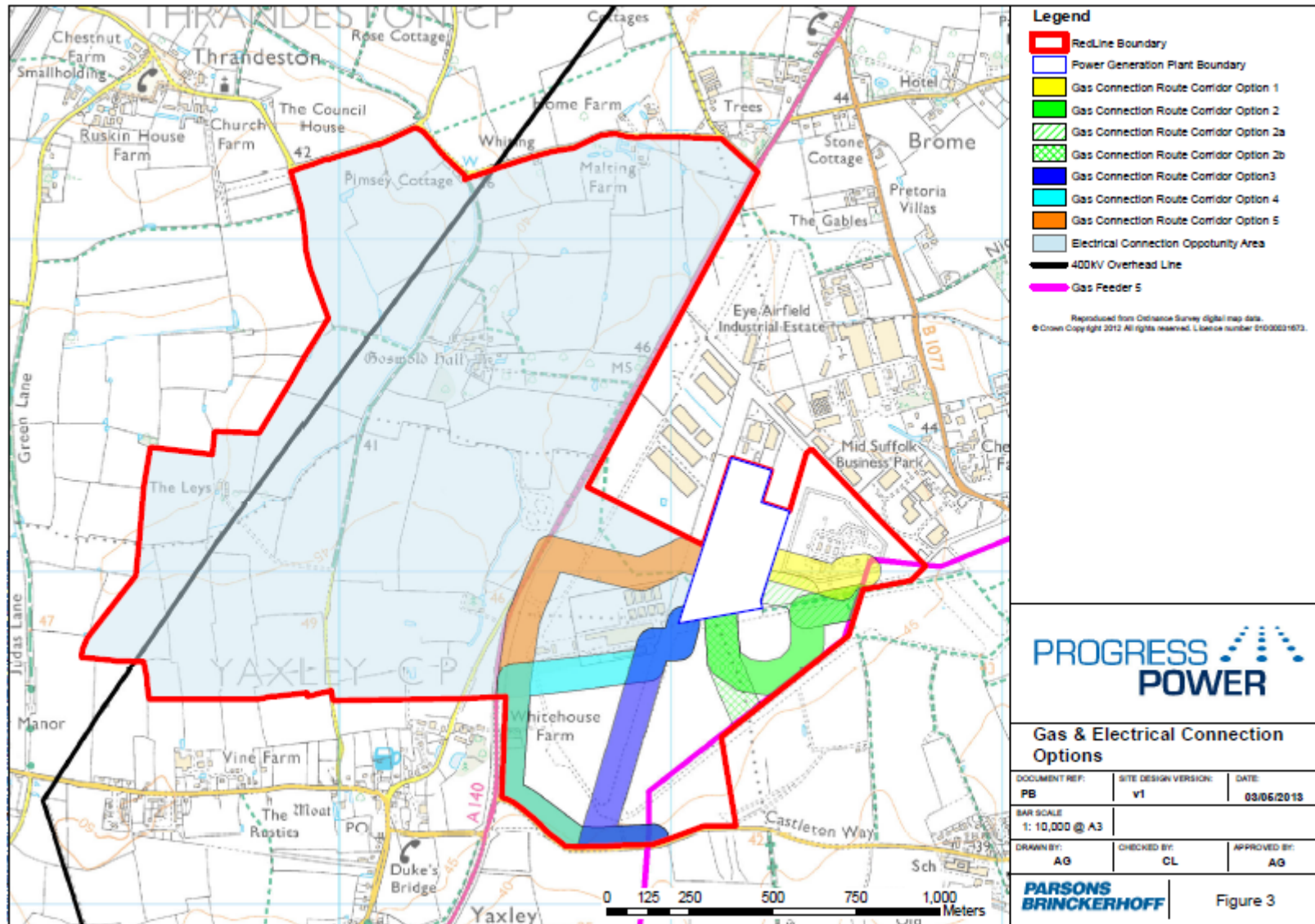
Progress Power Ltd, Mid Suffolk



Progress Power Ltd



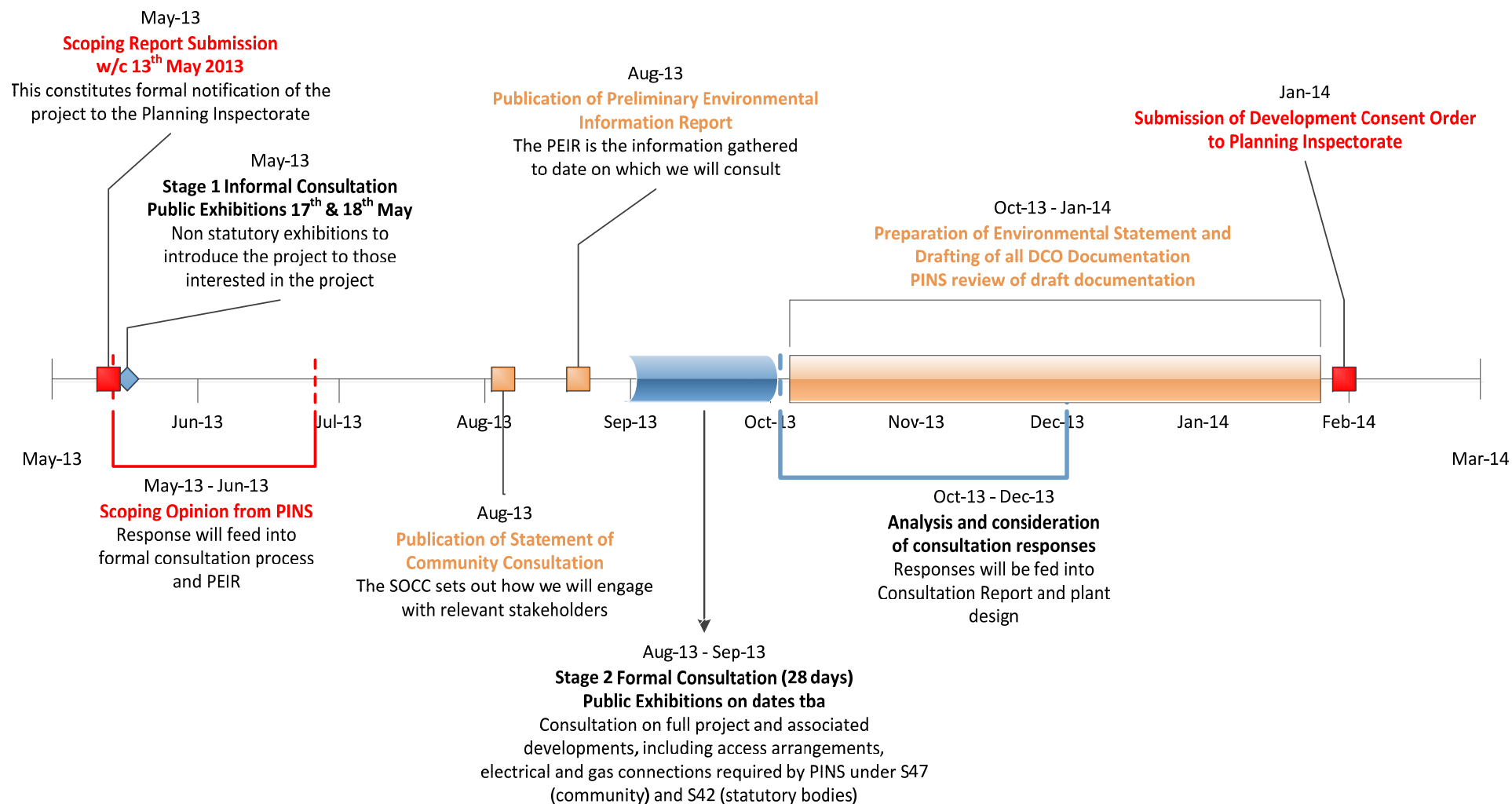
Progress Power Connections



Timelines

PPL – Pre Application Programme

Progress Power Limited – Project Milestones and Consultation Dates (Pre-Application)



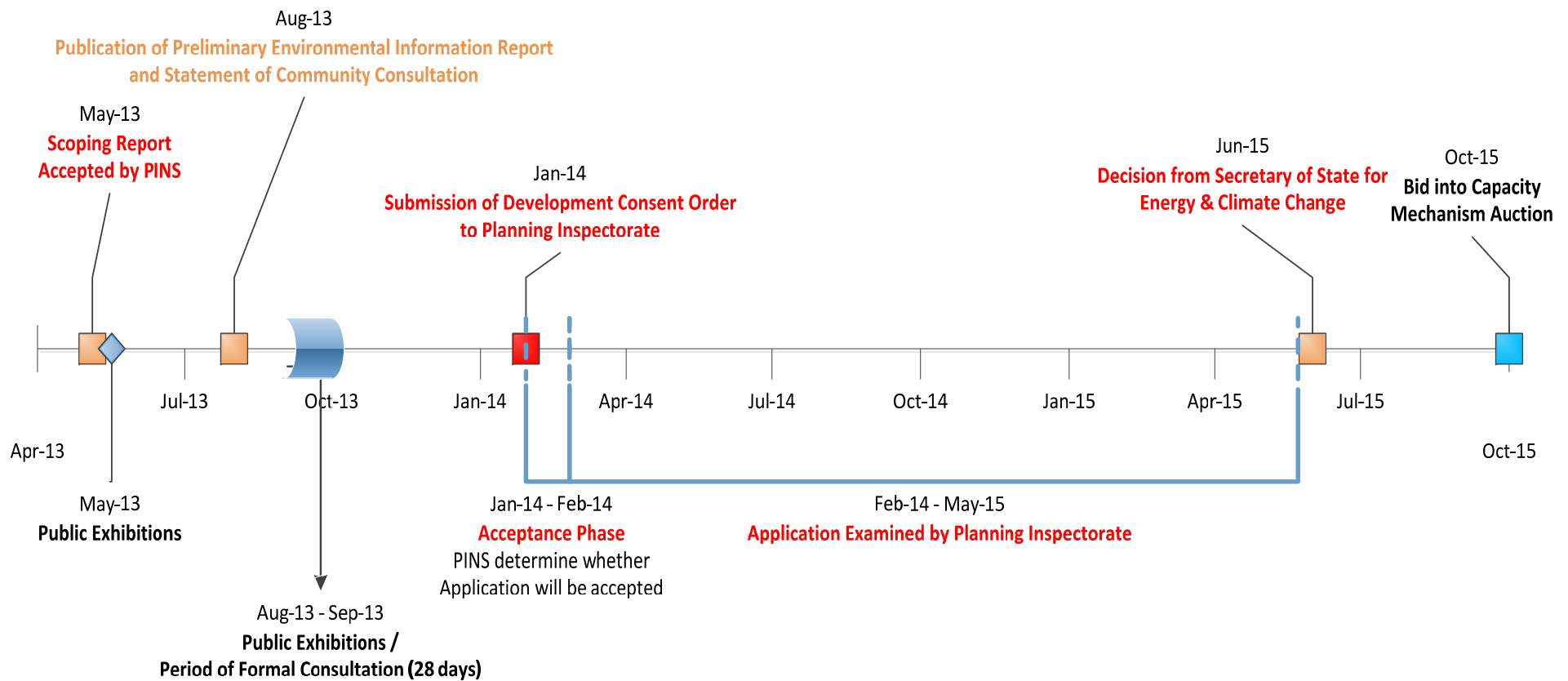
PPL – Project Programme

Progress Power Ltd – Project Milestones

Pre Application Phase

Examination Phase

Capacity
Auction Bid



EIA Headlines

Progress Power

- **Scoping Report submitted and highlights key environmental considerations**
 - Noise
 - Air Quality
 - Landscape and Visual Impact
 - Socio Economics

Electrical and Gas Connections

Gas and Electrical Connections – Progress Power

- **Gas connection \approx 0.1km – 1.6km**
- **Electrical connection \approx 1.5km**
- **Electrical connection could be an underground cable or an overhead line.**

Gas and Electrical Connections - Consents

- Both the gas and electrical connections may be included in the proposed DCO application.
- Proposed amendment to s.16 of the PA 2008 Act so that an OHL < 2km will no longer qualify as an NSIP.
- If not included in the DCO, the connections will likely be consented under the TCPA 1990 (possibly relying on PD rights).

Rochdale Envelope



Project Description – Example Parameters

<i>Project Component</i>	<i>Example Parameters</i>
Output	Up to 299MW
Turbine units	Up to 5 turbine units
Turbine hall	One turbine hall or standalone modular units
Stack(s)	Up to 5 stacks (option 1 or option 2)
Electrical Connection	Either underground cable or overhead line
Gas connection	Underground pipeline



Project Description - Discussion Points

- **Project description based on 'Rochdale Envelope' approach.**
- **EIA on realistic 'worst case' scenario.**
- **Single vs. multi-stack options**
- **Turbine hall and modular turbine units.**
- **Multiple works plans.**
- **Assessment of underground cable / OHL.**



Application Documents



Principal Documents

- Environmental Statement (ES) & Scoping Opinion
- ES Non Tech Summary
- ES Technical Appendices
- Consultation report
- Draft proposed order
- Explanatory memorandum
- Book of reference (if required)
- Statement of Reasons (if required)
- Funding Statement (if required)
- Flood risk assessment
- EPA 1990 Statement (if required)
- Habitats Regulations Assessment Statement
- Land plan/s
- Works plan/s
- Access/stopping up/diversion plan (if required)
- Nature conservation/protected species/water bodies plan/s
- Historic environment assets plan
- Plans showing design, appearance and layout of buildings
- Plans showing drainage, surface water management, vehicular and pedestrian access, car parking and landscaping
- Statements of Common Ground / Position Statement



APFP Regs 2009: Regulation 6 documents

- **Electricity connection statement**
- **Gas pipeline connection statement**



APFP Regs 2009: Other documents considered necessary

- **Design and Access Statement**
- **Planning Statement**
- **Copies of publicity, consultation and certification**
- **GIS shapefile**
- **Translated documents (where applicable, Welsh Language Act 1993)**
- **Details of other consents/licences**

Consent Services Unit



Consent Services Unit

- **Services offered by the CSU**
- **Preparing a Consents Management Plan**
- **Procedure for making use of the CSU's services**
- **Relation to 'parallel track' service offered by the Environment Agency?**



NEXT STEPS?

